

# ADJUSTABLE TEMPORARY SOCKET

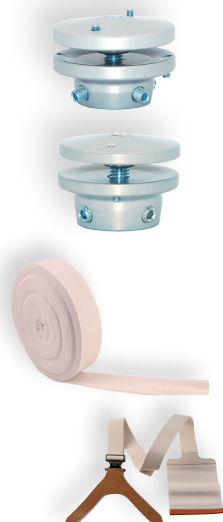


1N106  
1N107

Item N°.	Side	Item N° line	Circumference of residual limb base	Height Perineum / Socket End	Lower Connection	Use
1N06	-G / -D	3438	34 to 38 cm	26,5 cm	1N106	Adult
1N06	-G / -D	3943	39 to 43 cm			
1N06	-G / -D	4448	44 to 48 cm			
1N06	-G / -D	4953	49 to 53 cm			
1N06	-G / -D	5458	54 to 58 cm			
1N06	-G / -D	5963	59 to 63 cm	21,5 cm	1N107	Child
1N07	-G / -D	3033	30 to 33 cm			
1N07	-G / -D	3438	34 to 38 cm			

- This socket with adjustable closing allows an easy fitting for patients with recent trans-femoral amputation.
- A wide range of adult and child sizes.
- A suspension system is necessary (suspenders).
- We strongly recommend to protect the residual limb with jersey.

## RELATED PRODUCTS



- 1N106 : Linking Device for Temporary Adult Prosthesis
- 1N107 : Linking Device for Temporary Child Prosthesis
- TJ001/2/3/4/5 : Cotton Tubular Jersey
- 1X170 : Suspenders for Temporary Prosthesis